

**CONSTRUCTION**

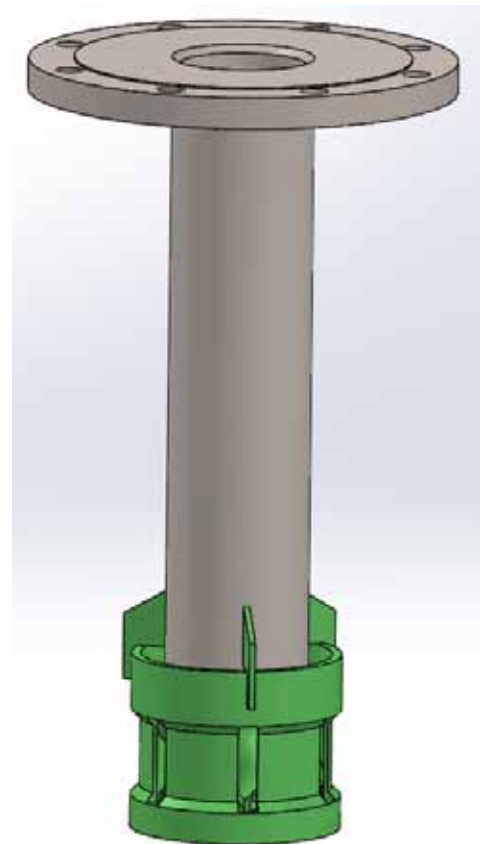
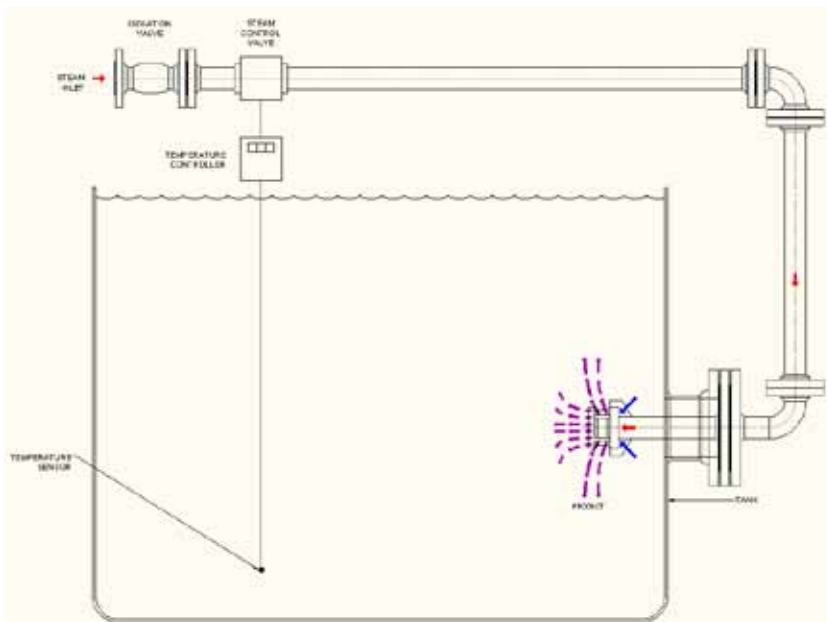
Standard Type 316 Stainless Steel is available in 1" through 8" pipe sizes with Class 150 lb double sided raised face flanged connection.

**THEORY OF OPERATION**

Each unit uses one custom-designed MXR Mixing Module. The product in the tank enters the Mixing Module around the periphery of the steam inlet pipe and is captured by the steam momentum. Product and Steam are divided and pre-mixed by the mixing element in each of the 6 mixing cavities. A set of multiple impingement mixing zones is developed on the side opening slots and at the Mixing Module exit which completes the contacting of steam and product shock-free or vibration-free.

This device is designed for the direct injection of steam into tanks for heating water compatible products in a quiet, vibration free, and 100% mixing efficiency. In addition they develop a strong stirring action to help keep any solids or particulates in suspension. This mixing action also helps to produce a uniform liquid temperature throughout the tank volume allowing accurate temperature control.

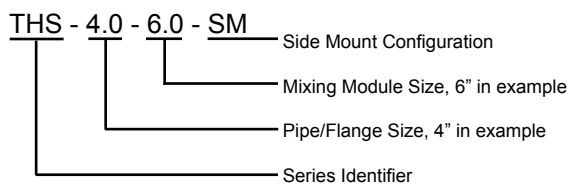
**Side Mount Installation:**



**The MXR "THS-SM" Tank Heater**

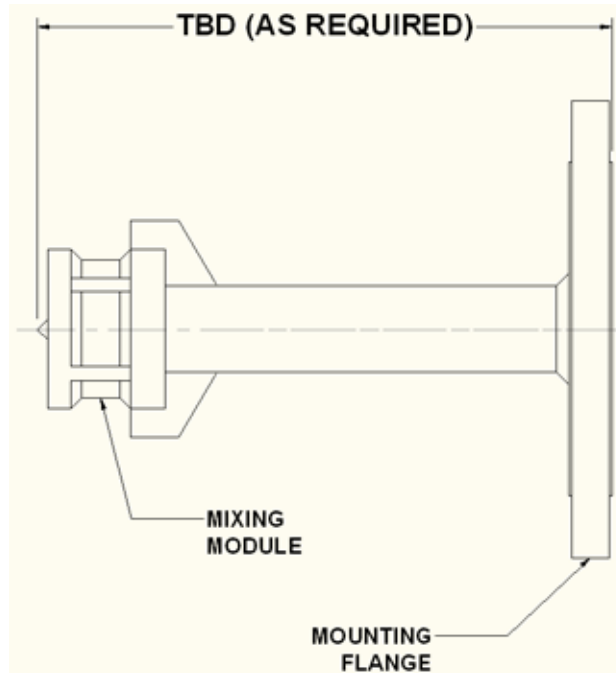
**Model Numbering Designation**

Standard units in type 316 stainless steel are numbered as follows.



Special part numbers for non standard units are issued by the company.

**“THS-SM” Series Tank Heaters**



SIZE	MODEL NO.
1"	THS - 1 - 2 - SM
1 1/2"	THS - 1.5 - 2.5 - SM
1 1/2"	THS - 1.5 - 3 - SM
2"	THS - 2 - 3 - SM
2"	THS - 2 - 4 - SM
2 1/2"	THS - 2.5 - 4 - SM
3"	THS - 3 - 5 - SM
4"	THS - 4 - 6 - SM
6"	THS - 6 - 10 - SM
8"	THS - 8 - 12 - SM
<b>ALL DIMENSIONS ARE IN INCHES</b>	

Contact:

**MXR Technologies, LLC**

40515 Green Oaks Dr. Temecula, CA 92592 USA

www.mxrtech.com

E-mail: info@mxrtech.com

Ph.: 1-951-303-4600 or 949-412-6525