

ALS-1/ALS-2 Analyzer Liquid Shutoff



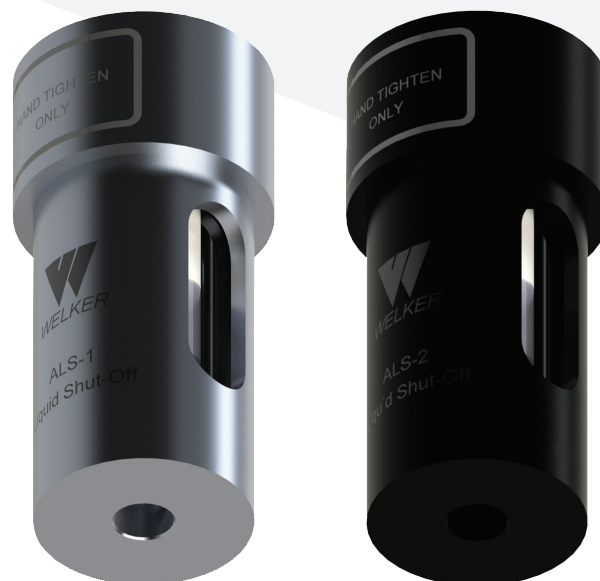
The Welker ALS Analyzer Liquid Shutoff is a low-cost, high quality device that protects sensitive equipment and high-value operations. Installed upstream, of your gas chromatograph, the ALS allows gas to flow freely for online sampling but shuts off flow in the presence of liquids.

Features

- Simple design
- Corrosion resistant material
- Ball check valve in transparent housing

Benefits

- Uncomplicated maintenance requires no special tools and little downtime
- Backflushing with dry inert gas quickly pushes liquids back to the pipeline
- Long-lasting analyzer protection
- Visual verification of gas flow
- Ball forms leak-tight seal in the presence of liquids



SPECIFICATIONS

ALS-1 & ALS-2 ANALYZER LIQUID SHUTOFF

ALS-1

| | |
|---------------------------|---|
| Materials of Construction | 316/316L Stainless Steel, Aluminum, Glass, LEXAN™, Teflon®, Viton® |
| Inlet Connection | 1/8" FNPT |
| Outlet Connection | 1/8" FNPT |
| Operating Pressure | Standard: 1000 psig MAOP @ -20 °F to 100 °F High Pressure: 1440 psig MAOP @ -20 °F to 100 °F |
| Product Certification | NACE Compliance |

ALS-2

| | |
|---------------------------|---|
| Materials of Construction | Anodized Aluminum, Glass, LEXAN™, Teflon®, Viton® |
| Inlet Connection | 1/8" FNPT |
| Outlet Connection | 1/8" FNPT |
| Operating Pressure | 600 psig MAOP @ -20 °F to 100 °F |

Weight and/or dimensions are approximate.
Specifications subject to change without notice.

